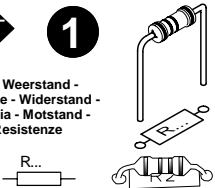


START

1

Resistor - Weerstand - Résistance - Widerstand - Resistencia - Motstand - Vastus - Resistenze



- ◇ R1 : 560
- ◇ R2 : 10K
- ◇ R3 ... R9 : 100

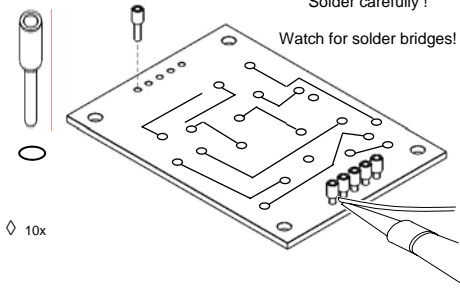
(Green, Blue, Brown) - (Groen, Blauw, Bruin) - (Vert, Bleu, Brun) - (Grün, Blau, Braun) - (Grön, Blå, Brun) - (Vihreä, Sininen, Ruskea) - (Marrón, Azul, Marrón) - (Verde, Azul, Castanho) - (Verde, Blu, Marrone)

(Brown, Black, Orange) - (Bruin, Zwart, Oranje) - (Brun, noir, Orange) - (Braun, Schwarz, Orange) - (Brun, Svart, Orange) - (Ruskea, Musta, Oranssi) - (Marrón, Negro, Naranjado) - (Castanho, Preto, Laranja) - (Marrone, Nero, Aranciato)

(Brown, Black, Brown) - (Bruin, zwart, Brown) - (Brun, noir, Brun) - (Braun, Schwarz, Braun) - (Brun, Svart, Brun) - (Ruskea, Musta, Ruskea) - (Marrón, Negro, Marrón) - (Castanho, Preto, Castanho) - (Marrone, Nero, Marrone)

11

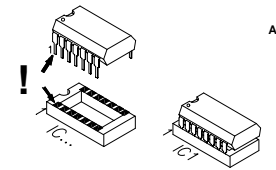
Tulip pinheader



◇ 10x

12

IC



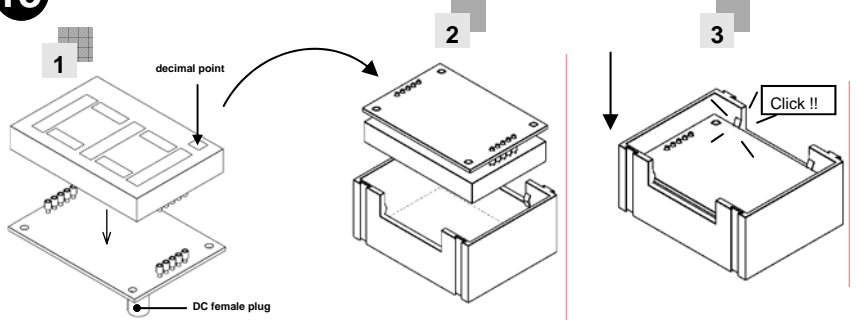
◇ IC1 : PIC16F630

WATCH THE POSITION OF THE NOTCH!
ATTENTION A LA POSITION DE L'ENCOCHE!



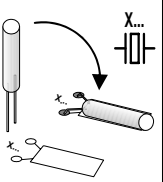
13

Assembly



6

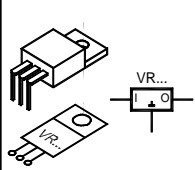
Crystal



◇ X1 : 32,76kHz.

7

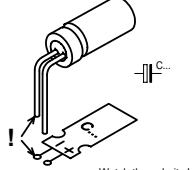
Voltage regulator



◇ VR1 : UA7809

8

Electrolytic capacitor

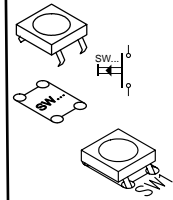


◇ C4 : 100µF / 25V
◇ C5 : 100µF / 25V

Watch the polarity!
Attention à la polarité!

9

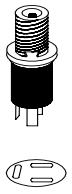
Push button



◇ SW1 : KRS0610

10

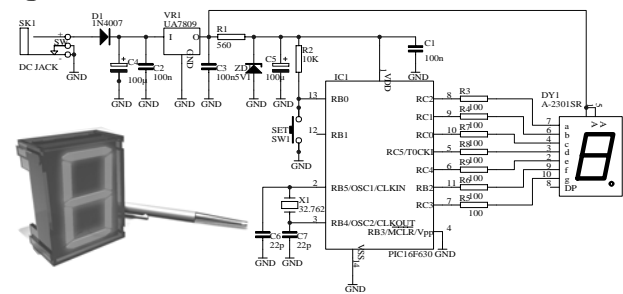
DC female plug



◇ SK1 : 9 - 12VDC / 150mA

14

Diagram



15

Manual

Connect a 9 - 12V DC power supply

To blank display : short press.
To show time : press again

- ◇ To set clock : Hold button. First digit blinks.
- ◇ Repeatedly press button to set digit.
- ◇ Hold button to set next digit.
- ◇ When all digits are set, 'P' is displayed.
- ◇ Press button briefly to start clock.